

CHARMILL

RESIDENTIAL



Merchant Square East, Paddington W2

£760



|



|



|



B

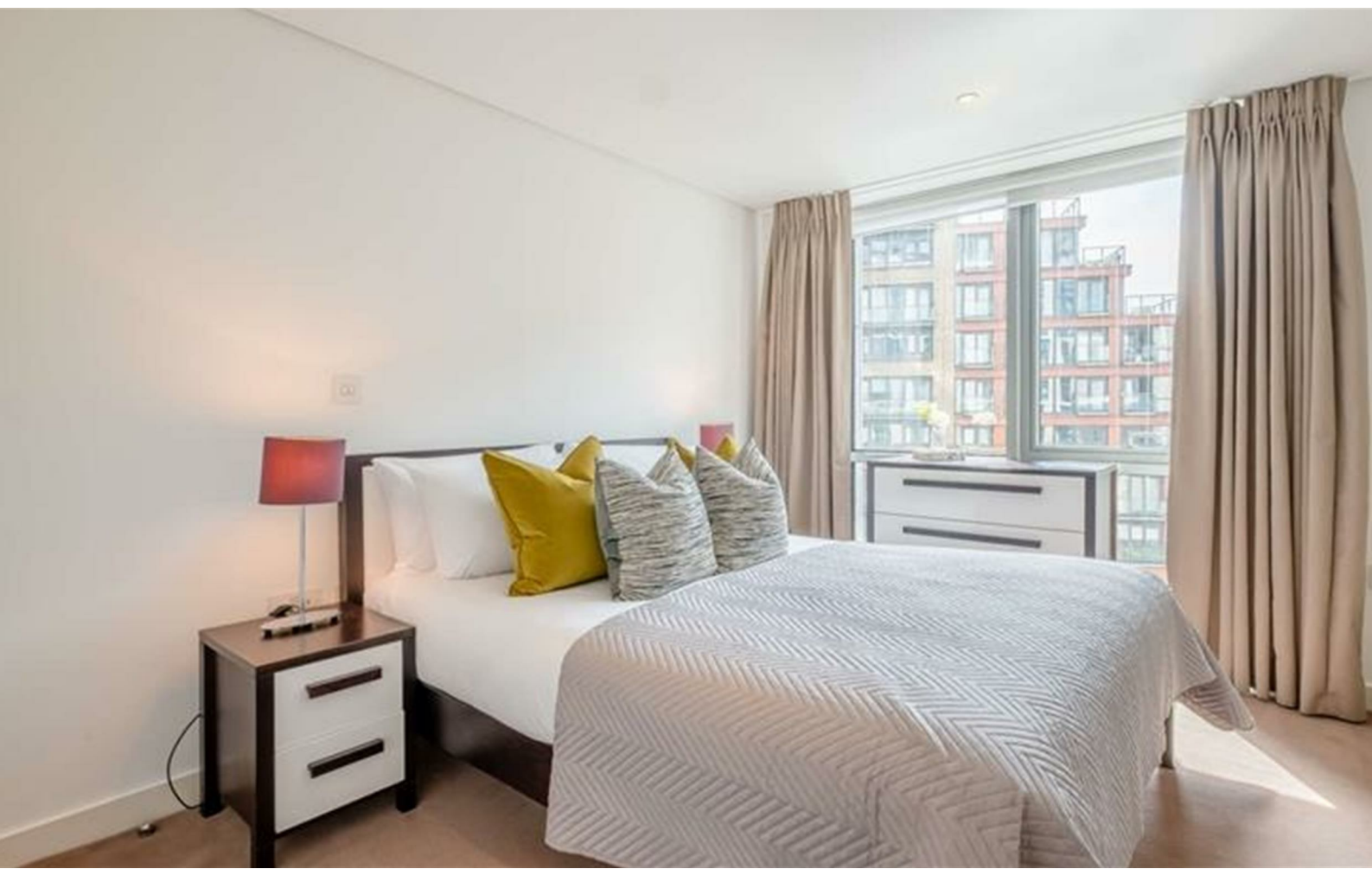
Merchant Square East



Description

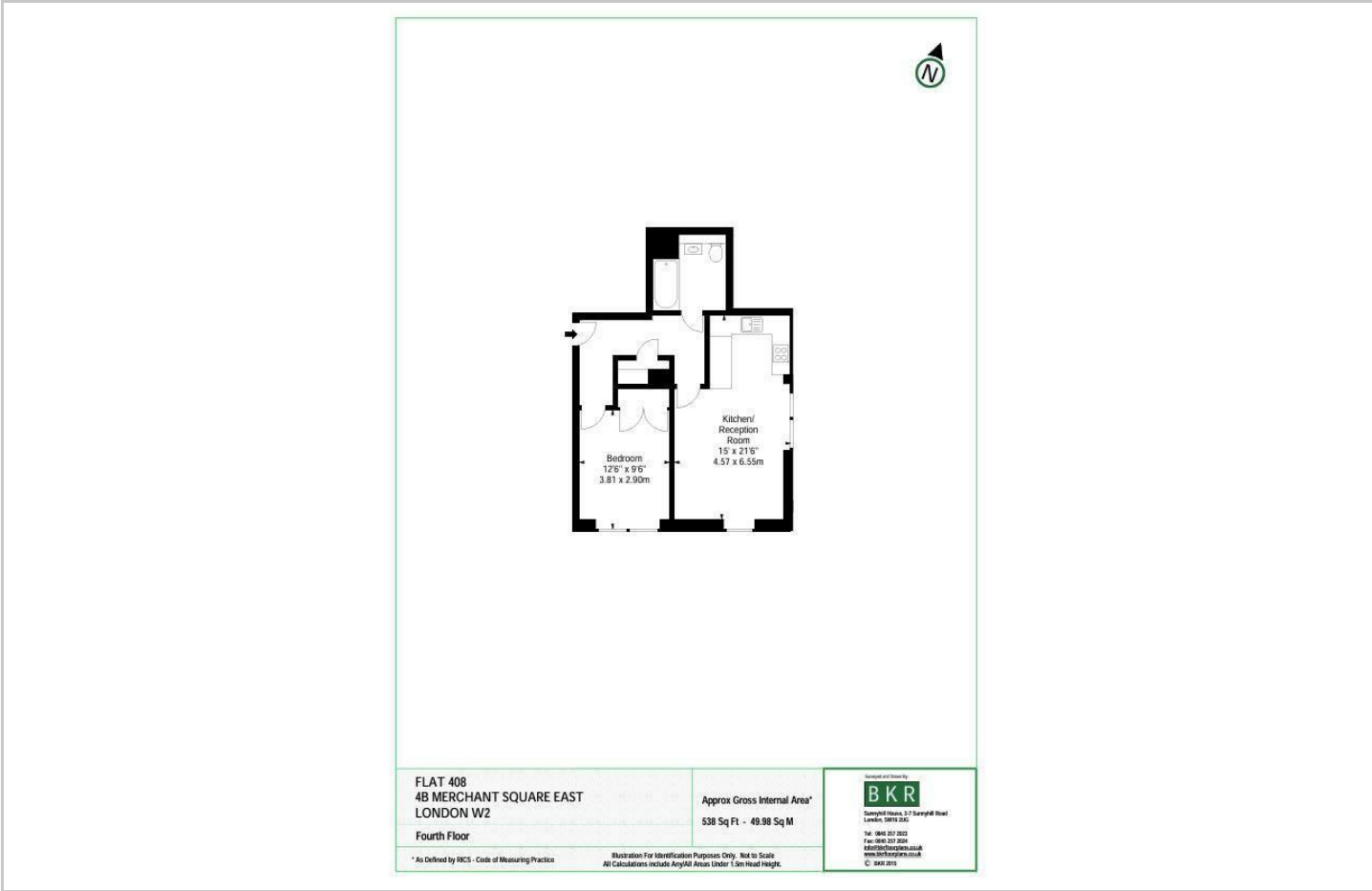
A beautiful interior designed one bedroom apartment set within the heart of the Paddington Basin and close to the popular West End Quay. This superb flat is situated on the fourth floor of a prestigious building which features a 24 concierge, lift and secure underground parking. This stunning apartment comprises one large bedroom, bathroom and a spacious reception room with a modern fully fitted open plan kitchen. The apartment further benefits from ample storage and offers easy access to a large number of transport links such as Paddington station (Bakerloo, Hammersmith & City, Circle, District lines and Heathrow) and Edgware Road station (Circle, District and Bakerloo lines).

- Open plan kitchen/reception room
- Bathroom
- Lift
- CCTV
- One bedroom
- Secure underground parking
- Close to excellent transport links

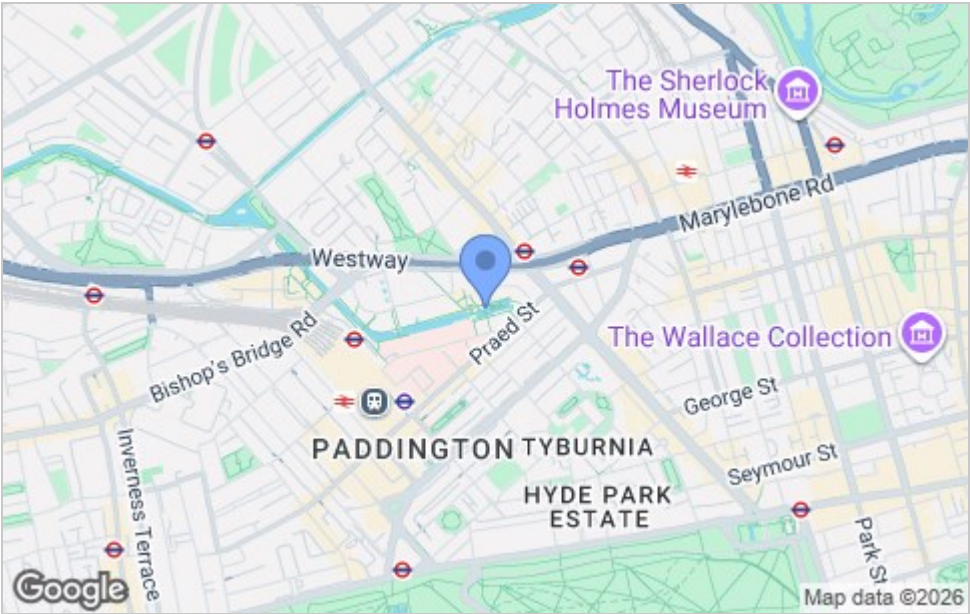




Floor Plan



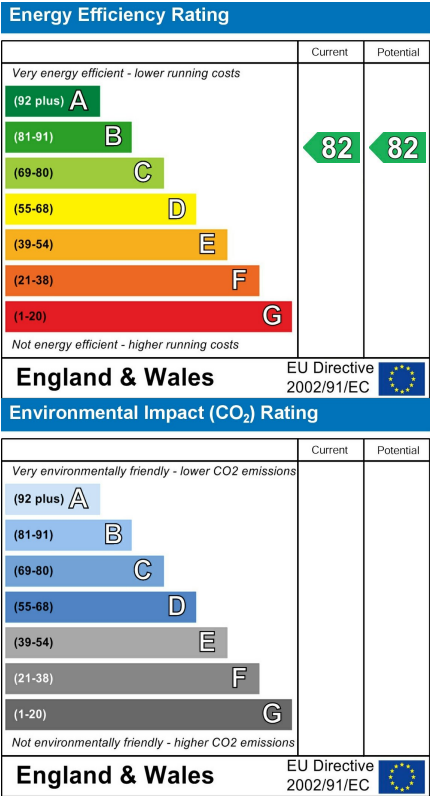
Area Map



Viewing

Please contact us on 020 7046 6275 if you wish to arrange a viewing appointment for this property or require further information.

Energy Efficiency Graph



These particulars, whilst believed to be accurate are set out as a general outline only for guidance and do not constitute any part of an offer or contract. Intending purchasers should not rely on them as statements of representation of fact, but must satisfy themselves by inspection or otherwise as to their accuracy. No person in this firm's employment has the authority to make or give any representation or warranty in respect of the property.

020 7046 6275 • sales@charmillresidential.co.uk • 51 Maida Vale, Little Venice, London W9 1SD
charmillresidential.co.uk